

Mobile DVR backup device User Manual

1. Installation notice

It is not including the HDD when it left the factory, the HDD is installed according to your requirements, please calculate the total capacity of the HDD before the installation. You should refer to the installation instruction while you are opening the box and installing the HDD.

2. Installation tools

One cross screw driver

3. Installation steps

1. Open the box
2. First plug the HDD power connector to the HDD, then connect the ATA cable correctly and fixed it with screw.
3. Cover and fix the box with screw.

4. Physical interface instruction

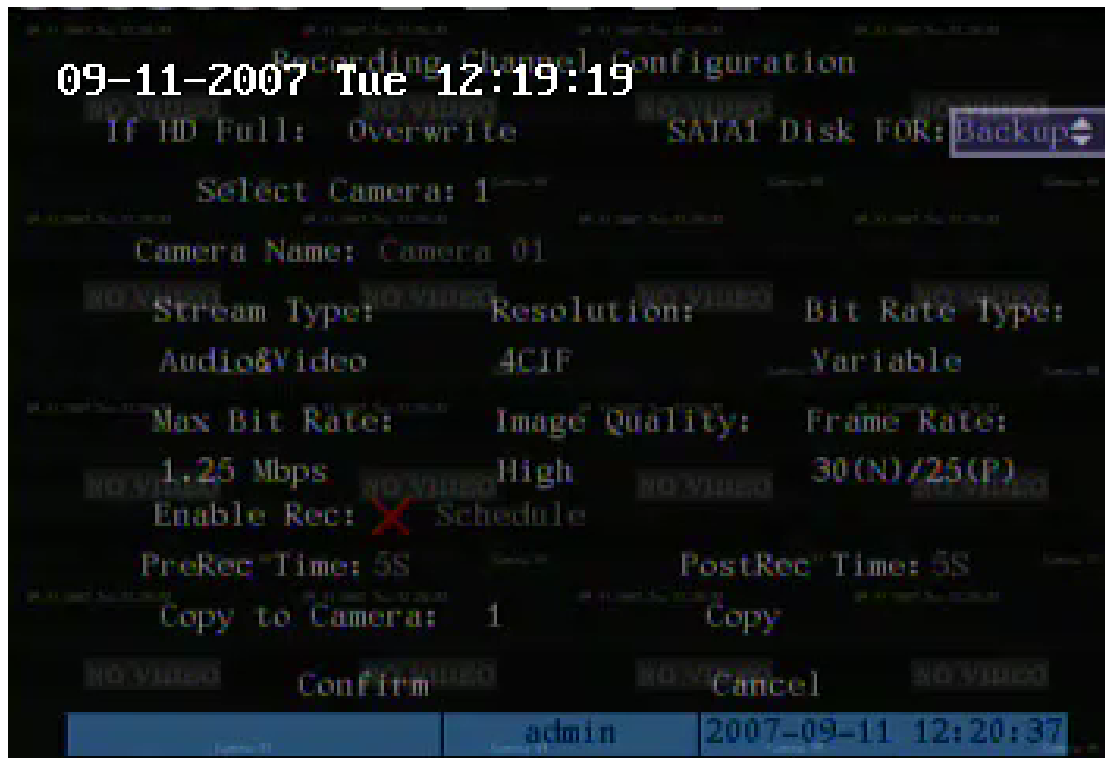
NO	Physical interface	Connect instruction
1	DC IN	DC +12V power input
2	1394	Connect to the PC 1394 port
3	USB	Connect to the PC or other related device
4	SATA	Standard SATA backup interface
5	Video In	Connect to the Video out of the mobile DVR

5. Operation instruction

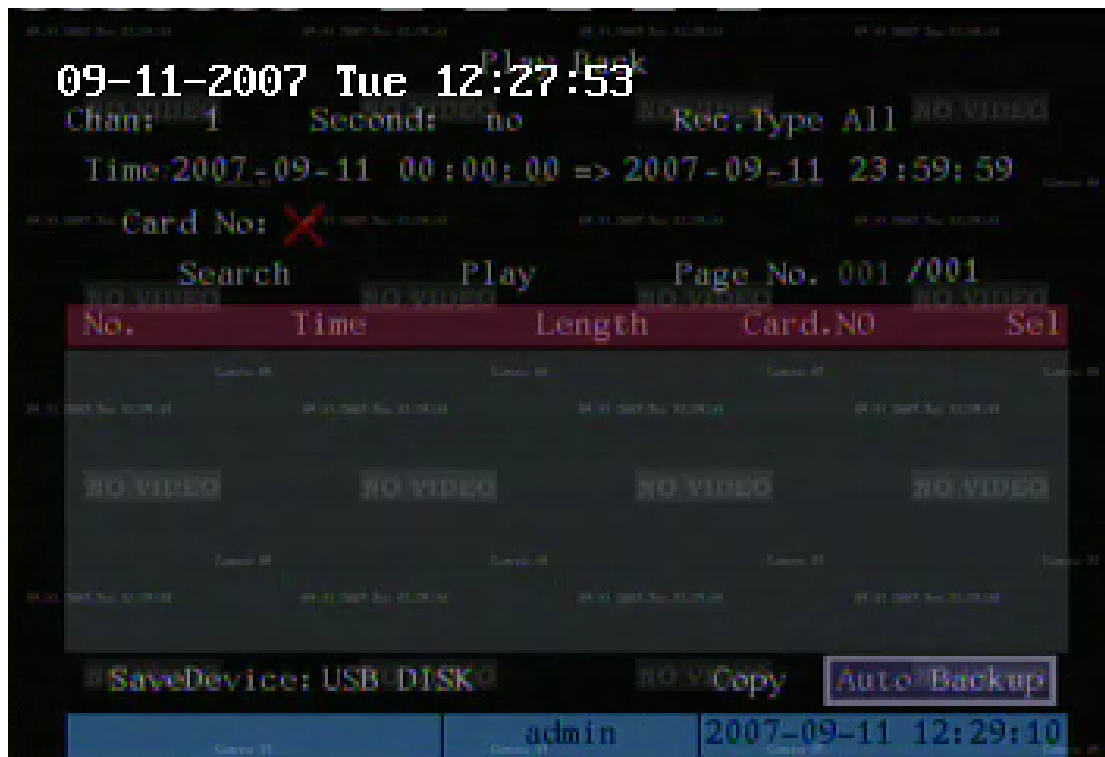
First you should format the HDD which in the backup device:

Step1. Connect the backup device(SATA port) with the mobile DVR (eSATA port) with the SATA cable.

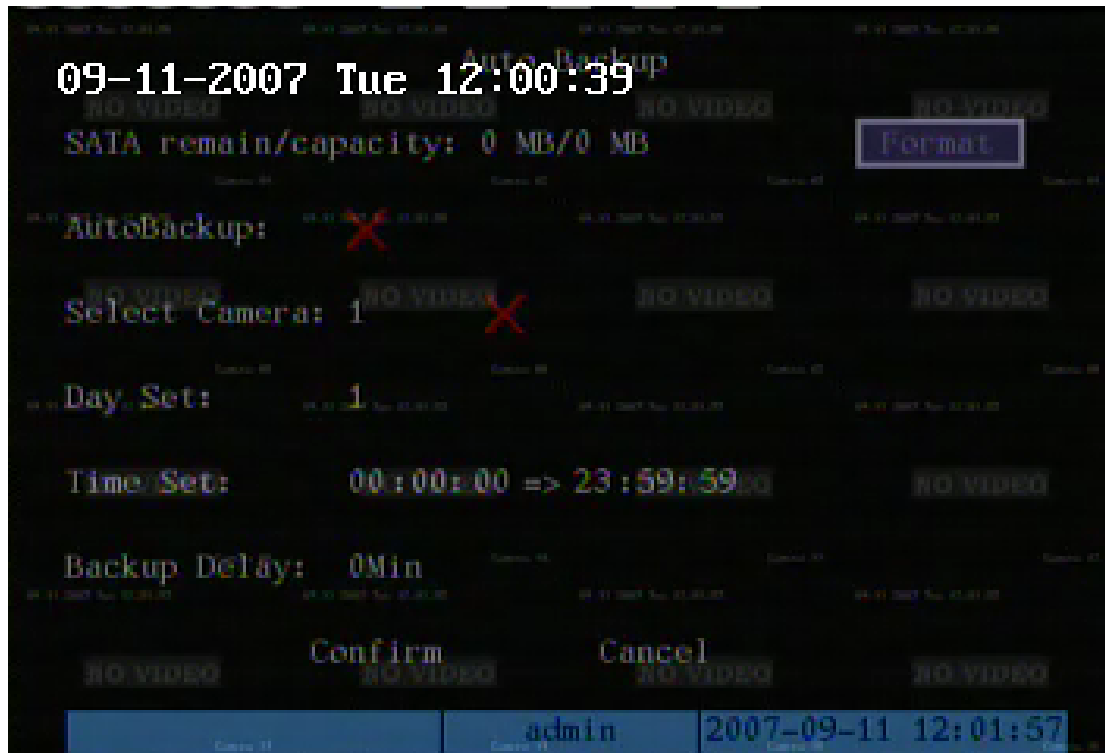
Step2. Enter into the mobile DVR main menu----recording interface. Here you can select the option “SATA Disk For” to “Backup”, then select “confirm” and reboot the DVR. Show as the picture below.



Step3. Enter into the mobile DVR play back menu and select and enter into the option “Auto Backup”. Show as the picture below.



Step4. After you enter into the “Auto Backup” option, you can select the “Format” option to format the HDD. Show as the picture below.



Step5. After the HDD formatting, you can do the backup by manual or auto backup. If you do the backup by manual, you just have to search the record file and select them, then select the save device to SATA HDD and select the “copy” button. If you do the auto backup, you need to connect the backup device with the mobile DVR at the backup period. You can select one channel or all the channels to backup and the detail backup period.

Step6. Switch off the power of the backup device after the record files are copied successfully. Then you can take the backup device to another place and play the file in the PC.